

FreeRider[®]
working together

SPARE PARTS MANUAL

Knightsbridge-S

FR168-3S



U.K. 168-3S--LC2BBA2

INDEX

P1 HANDLE BAR ASSEMBLY

P2 CHASSIS MOULDINGS

P3 STEERING

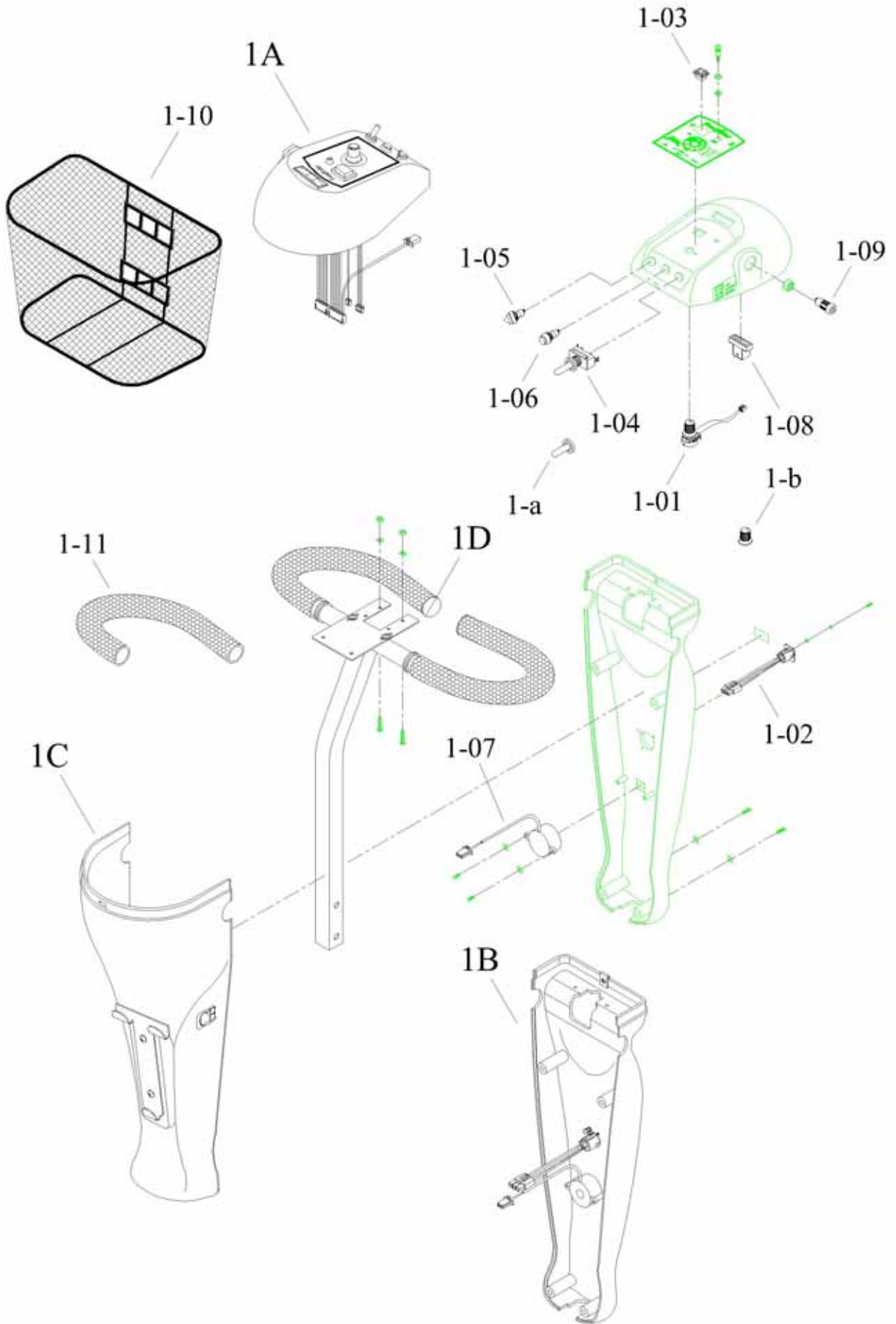
P4 FRONT CHASSIS ASSEMBLY

**P5 REAR CHASSIS ASSEMBLY-DRIVE
SYSTEM**

P6 SEAT ASSEMBLY

P7 CONSOLE AND WIRING SYSTEM

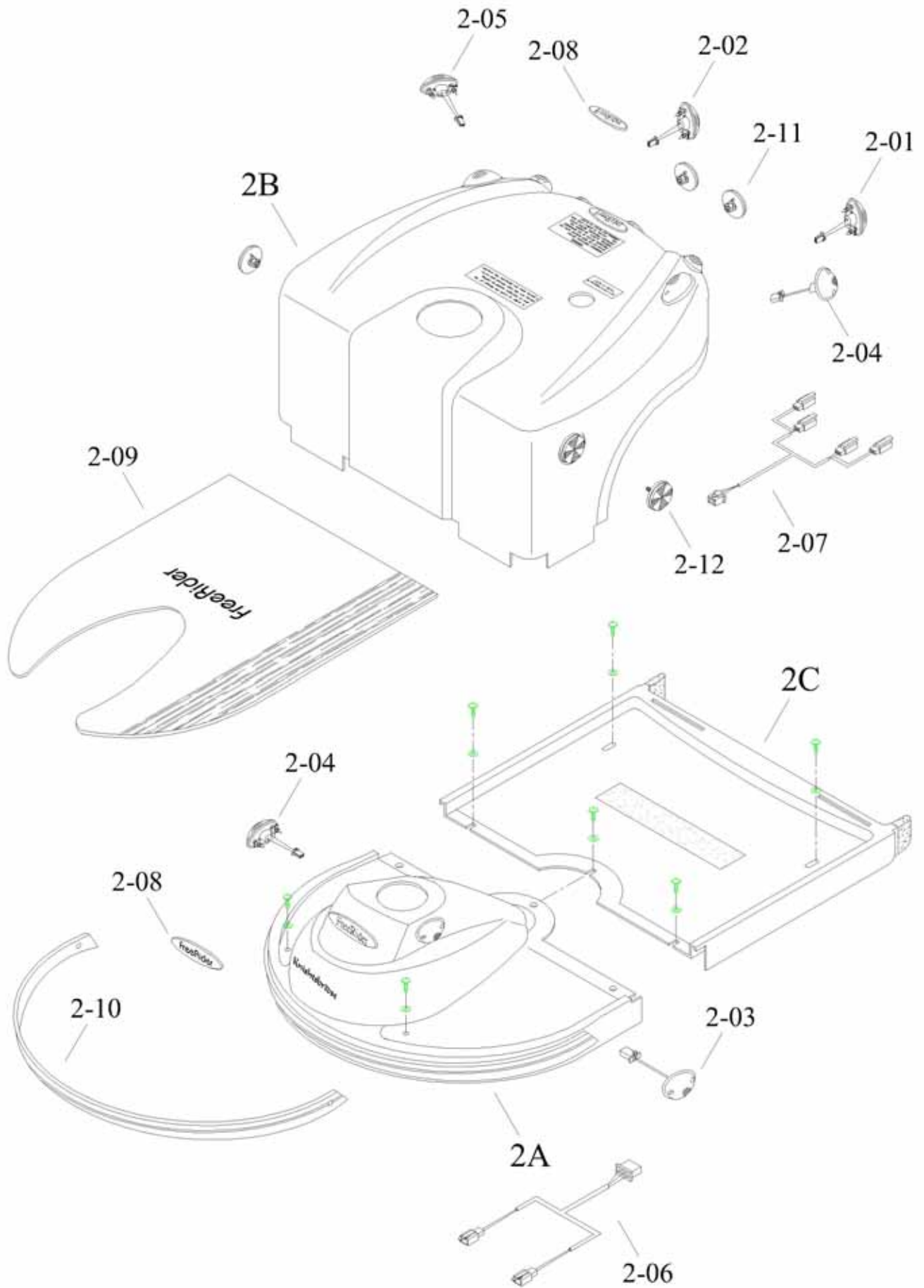
HANDLE BAR ASSEMBLY



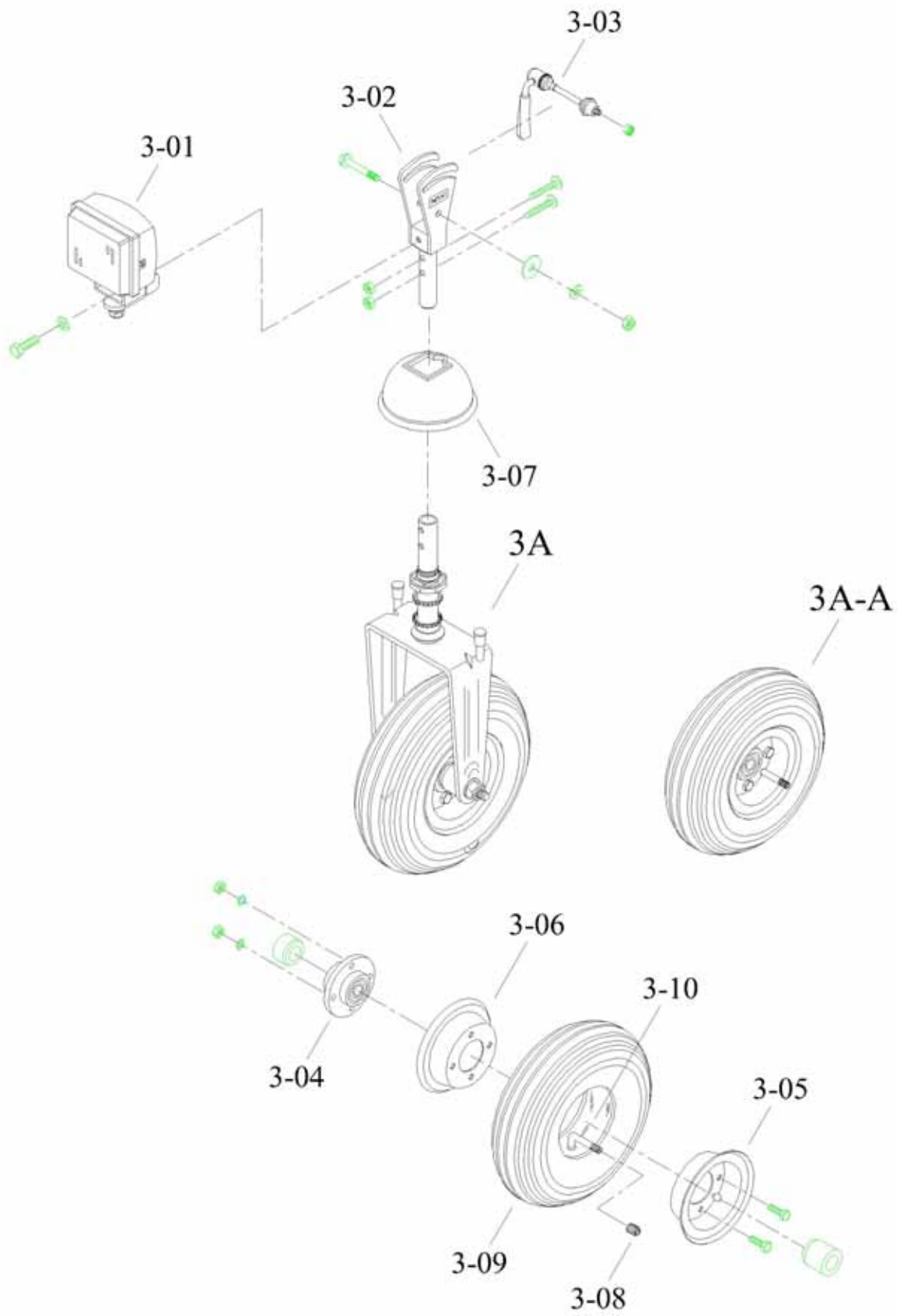
HANDLE BAR ASSEMBLY

DRAWING NO.	PART NO.	PART NAME			
1A	AA01-0100-C2	TOP CONSOLE COVER ASSY.			
1B	AA02-0100-C2	HANDLE BAR COVER REAR ASSY.			
1C	AA03-0400-C2	HANDLE BAR COVER FRONT ASSY.			
1D	PA01-A401	HANDLE BAR ASSY.			
1-01	PAE1-0100-MO	VARIABLE RESISTOR 20KVR ASSY.			
1-02	PAE1-0405-NP	CHARGER SOCKET ASSY.			
1-03	PAE1-0800	HEADLIGHT SWITCH ASSY.			
1-04	PKE1-0105	INDICATOR SWITCH ASSY.			
1-05	PKE1-0101	WARNING LIGHT SWITCH			
1-06	PKE1-0103	HORN BUTTON			
1-07	PKE1-0603	HORN			
1-08	PKE1-0700	BATTERY METER ASSY.			
1-09	PM01-0100	KEY SWITCH			
1-10	PM90-0100	BASKET			
1-11	PP02-0501	HAND GRIP			
1-a	PP01-0200	INDICATOR SWITCH CAP			
1-b	PP01-0500	SPEED KNOB			

CHASSIS MOULDINGS



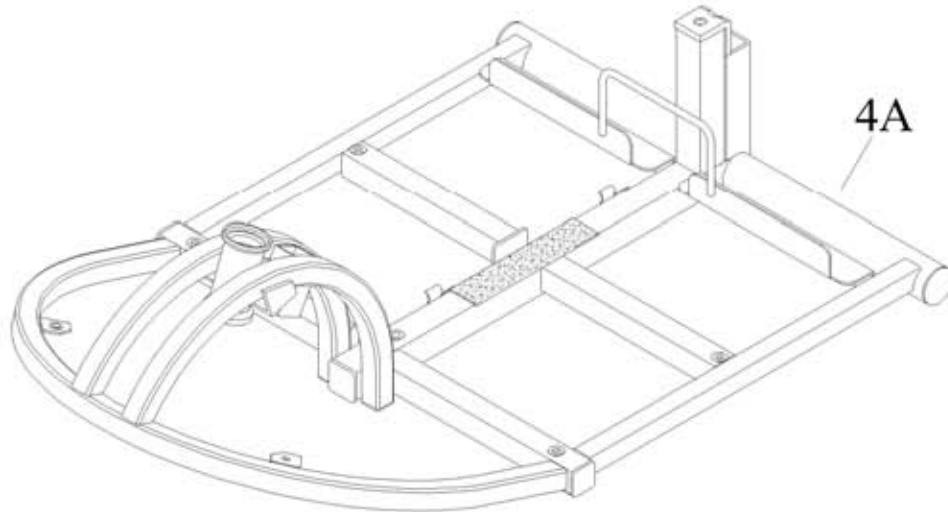
STEERING



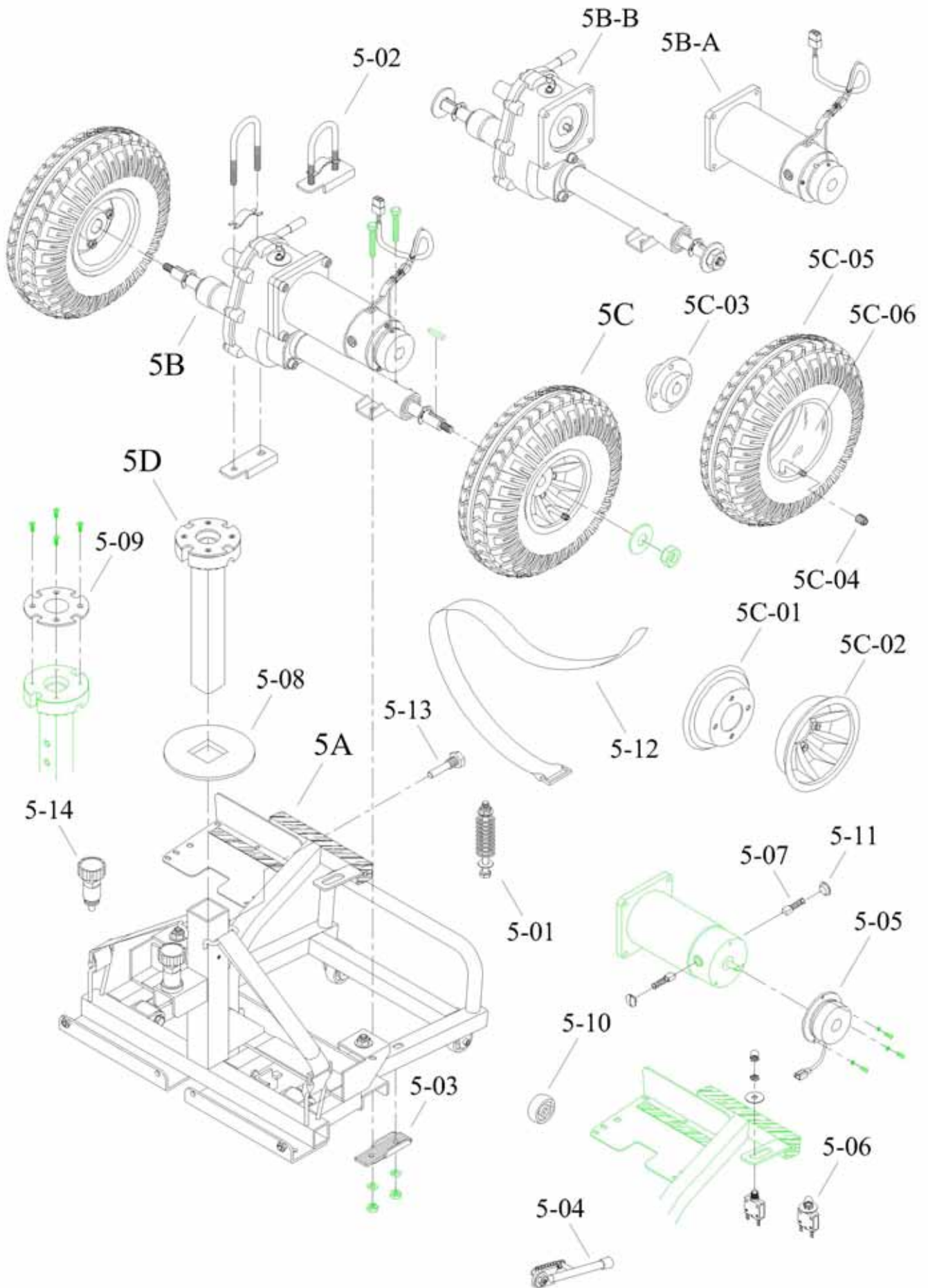
STEERING

DRAWING NO.	PART NO.	PART NAME			
3A	AC08-0402	STEERING SHAFT ASSY			
3A-A	AC12-0400-GI	FRONT WHEEL ASSY.			
3-01	PA06-A102	HEAD LIGHT ASSY			
3-02	PA10-A100	HANDLE BAR JOINTBASE ASSY.			
3-03	PA10-A200	TIGHTEN HANDLE ASSY.			
3-04	PA12-A100	HUB ASSY. (FRONT)			
3-05	PM12-0301	OUTER RIM 10"			
3-06	PM12-0302	INNER RIM (STEEL) 10"			
3-07	PP10-0101	RUBBER COVER FRONT			
3-08	PP92-0001	VALVE CAP			
3-09	PP92-0300-GI	(3.00-4 C-179N) TYRE			
3-10	PP93-0300-I	(3.00-4) TUBE			

FRONT CHASSIS ASSEMBLY



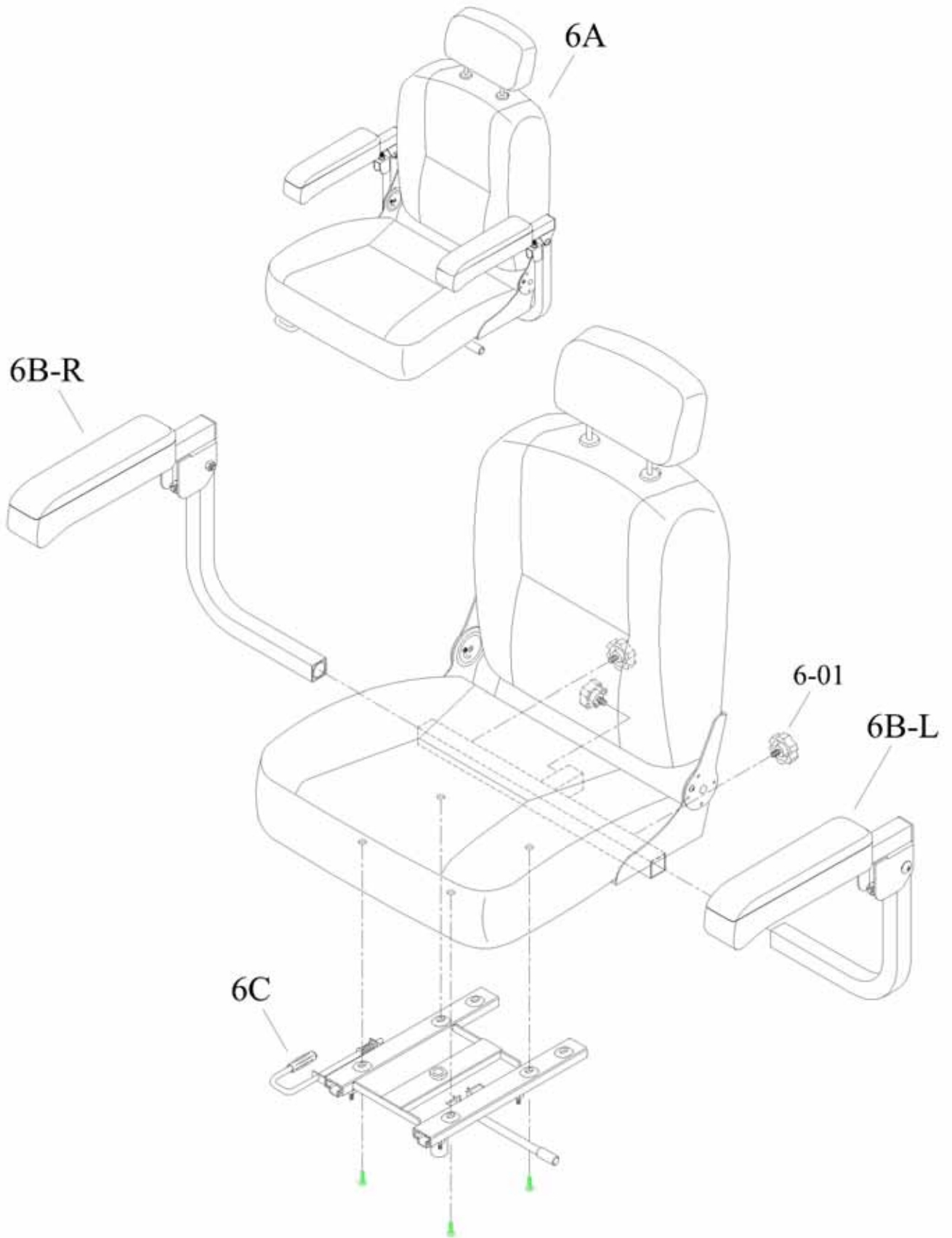
REAR CHASSIS ASSEMBLY-DRIVE SYSTEM



REAR CHASSIS ASSEMBLY-DRIVE SYSTEM

DRAWING NO.	PART NO.	PART NAME			
5A	AB07-0400-S	REAR CHASSIS ASSY.			
5B	AC11-0700-D51	TRANS AXLE ASSY.			
5B-A	PA05-A121-D51	MOTOR ASSY.			
5B-B	PA11-A200	TRANS AXLE ASSY.			
5C	AC13-0400-GC	D19 REAR WHEEL ASSY.			
5C-01	PM12-0300	RIM 13"			
5C-02	PM12-0400	RIM OUTER (AL., BLACK)			
5C-03	PM13-0104	D19 HUB (REAR)			
5C-04	PP92-0001	VALVE CAP			
5C-05	PP92-0401-GC	(4.10/3.50-5) TYRE			
5C-06	PP93-0401-C	(4.10/3.50-5) TUBE			
5D	PA06-A701	SEAT POST ASSY.			
5-01	PA06-B100	PRESSING SPIRAL SPRING ASSY.			
5-02	PA07-A600	M8 U TYPE SCREW ASSY.			
5-03	PA07-A700	U TYPE BRACKET ASSY.			
5-04	PA07-A900	STILT ASSY.			
5-05	PM11-0110	MAGNETIC BRAKE			
5-06	PKE2-0403	CIRCUIT BREAKER 35AMP			
5-07	PM11-0401	MOTOR CARBON BRUSH			
5-08	PP06-0102	TUBBER COVER REAR FLAT			
5-09	PP06-0202	SEAT POST REAR FLAT			
5-10	PP07-0102	ANTI-TIP WHEEL SMALL			
5-11	PP11-0202	MOTOR CARBON BRUSH CAP			
5-12	PP90-0401	SEAT POST REAR FLAT			
5-13	PV00-0702-1	7/16×8×48L BOLT			
5-14	PV06-0801	RELEASE TIGHTEN KNOB			

SEAT ASSEMBLY



CONSOLE AND WIRING SYSTEM

