

FreeRider[®]
working together

SPARE PARTS MANUAL

Mayfair-s

FR168-4S2b



U.K. 168-4S2b-BK2BBA2

INDEX

P1 HANDLE BAR ASSEMBLY

P2 FRONT CHASSIS ASSEMBLY

P3 CHASSIS MOULDINGS

P4 REAR CHASSIS ASSEMBLY-DRIVE

SYSTEM

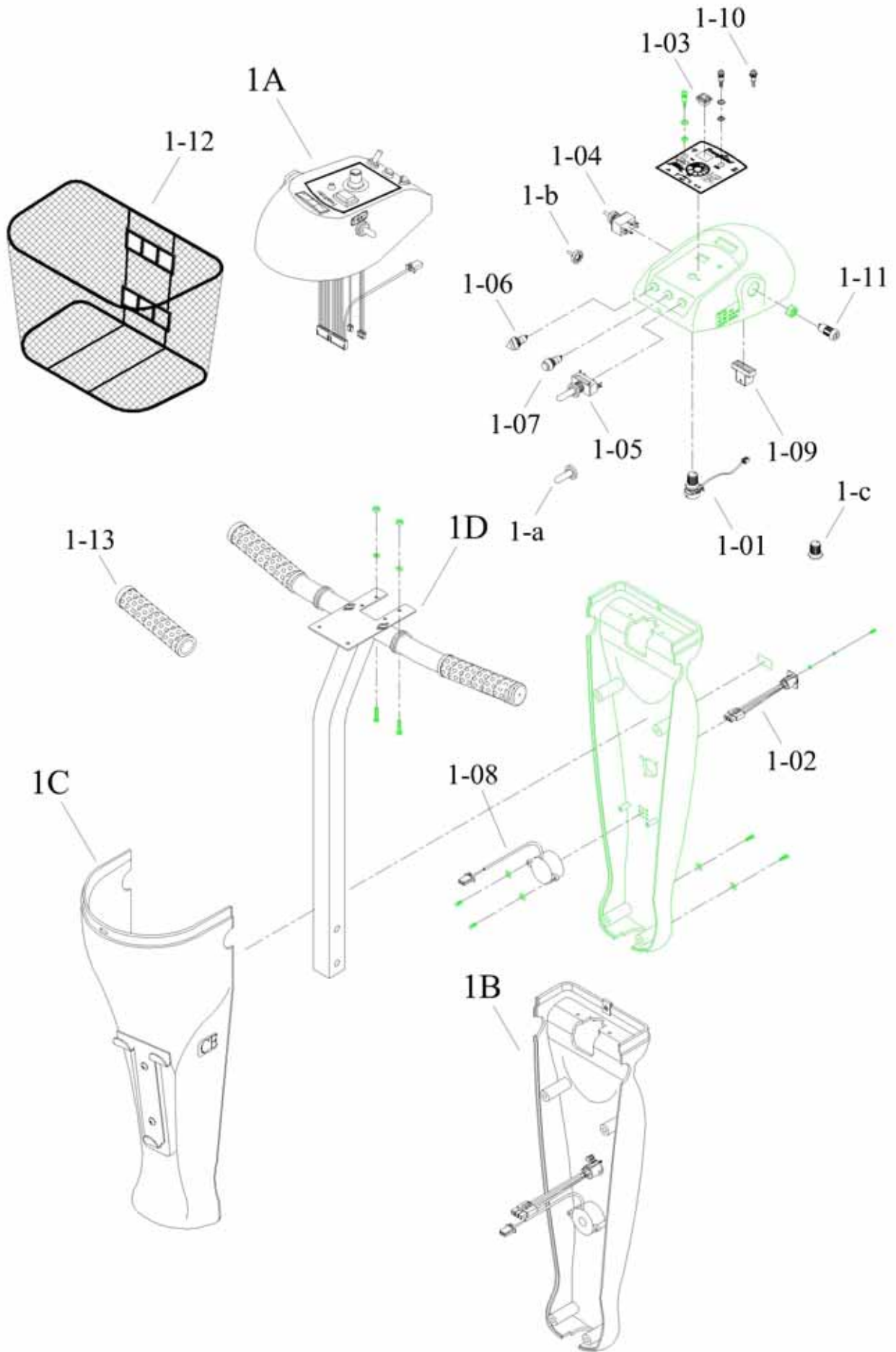
P5 STEERING

P6 HAND BRAKE ASSEMBLY

P7 SEAT ASSEMBLY

P8 CONSOLE AND WIRING SYSTEM

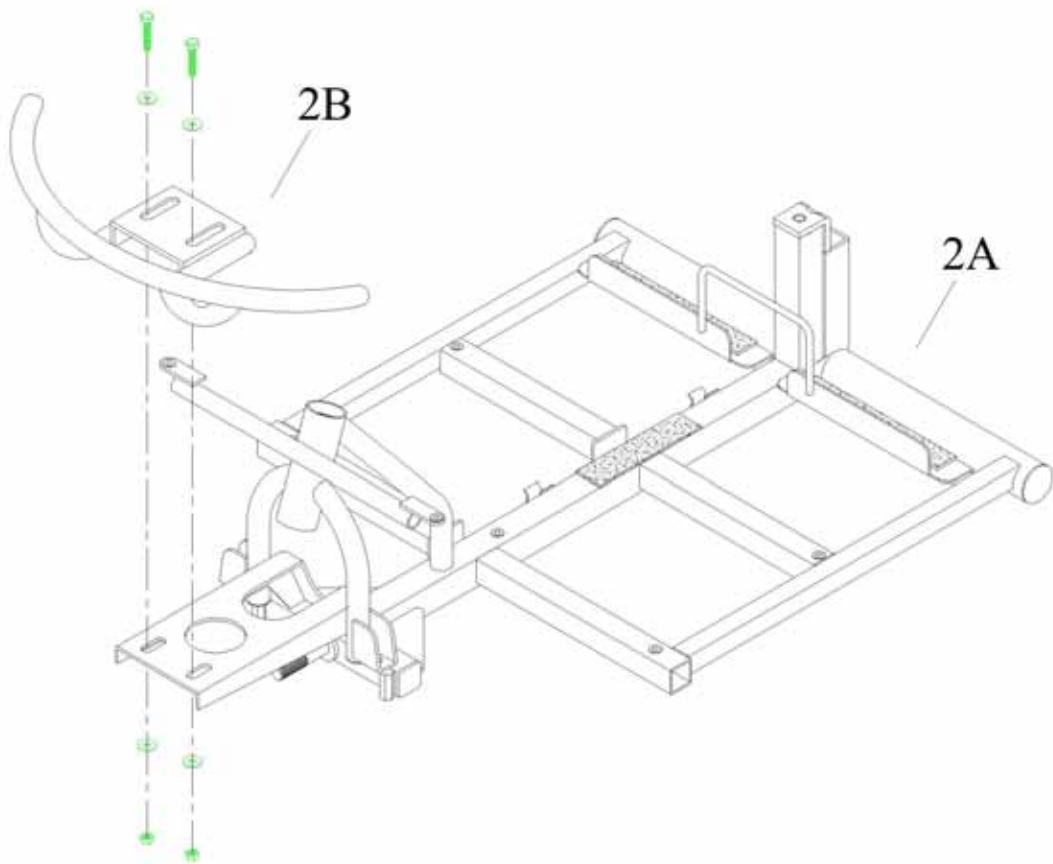
HANDLE BAR ASSEMBLY



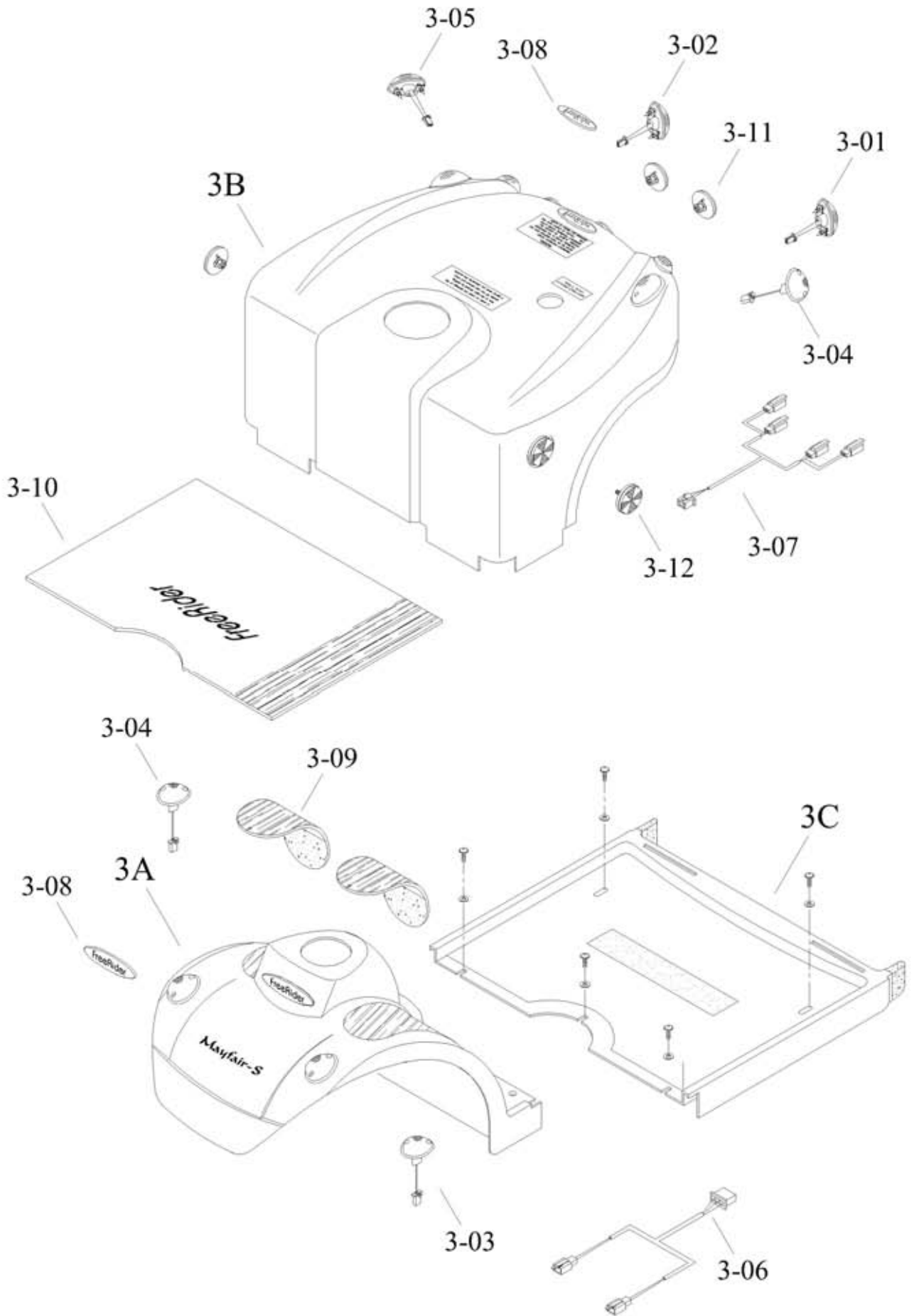
HANDLE BAR ASSEMBLY

DRAWING NO.	PART NO.	PART NAME			
1A	AA01-0203-D2	TOP CONSOLE COVER ASSY.			
1B	AA02-0100-D2	HANDLE BAR COVER REAR ASSY.			
1C	AA03-0200-D2	HANDLE BAR COVER FRONT ASSY.			
1D	PA01-A300	HANDLE BAR ASSY.			
1-01	PAE1-0101-MO	VARIABLE RESISTOR 50KVRASSY. (HI/LO)			
1-02	PAE1-0405-NP	CHARGER SOCKET ASSY.			
1-03	PAE1-0800	HEADLIGHT SWITCH ASSY.			
1-04	PKE1-0104	HI/LO SPEED SWITCH ASSY			
1-05	PKE1-0105	INDICATOR SWITCH ASSY.			
1-06	PKE1-0101	WARNING LIGHT SWITCH			
1-07	PKE1-0103	HORN BUTTON			
1-08	PKE1-0603	HORN			
1-09	PKE1-0700	BATTERY METER ASSY.			
1-10	PKE1-0802	HI/LO SPEED LED (RED)			
1-11	PM01-0100	KEY SWITCH			
1-12	PM90-0100	BASKET			
1-13	PP02-0200-PVC	HAND GRIP (PVC)			
1-a	PP01-0200	INDICATOR SWITCH CAP			
1-b	PP01-0201	HI/LO SPEED SWITCH CAP			
1-c	PP01-0500	SPEED KNOB			

FRONT CHASSIS ASSEMBLY



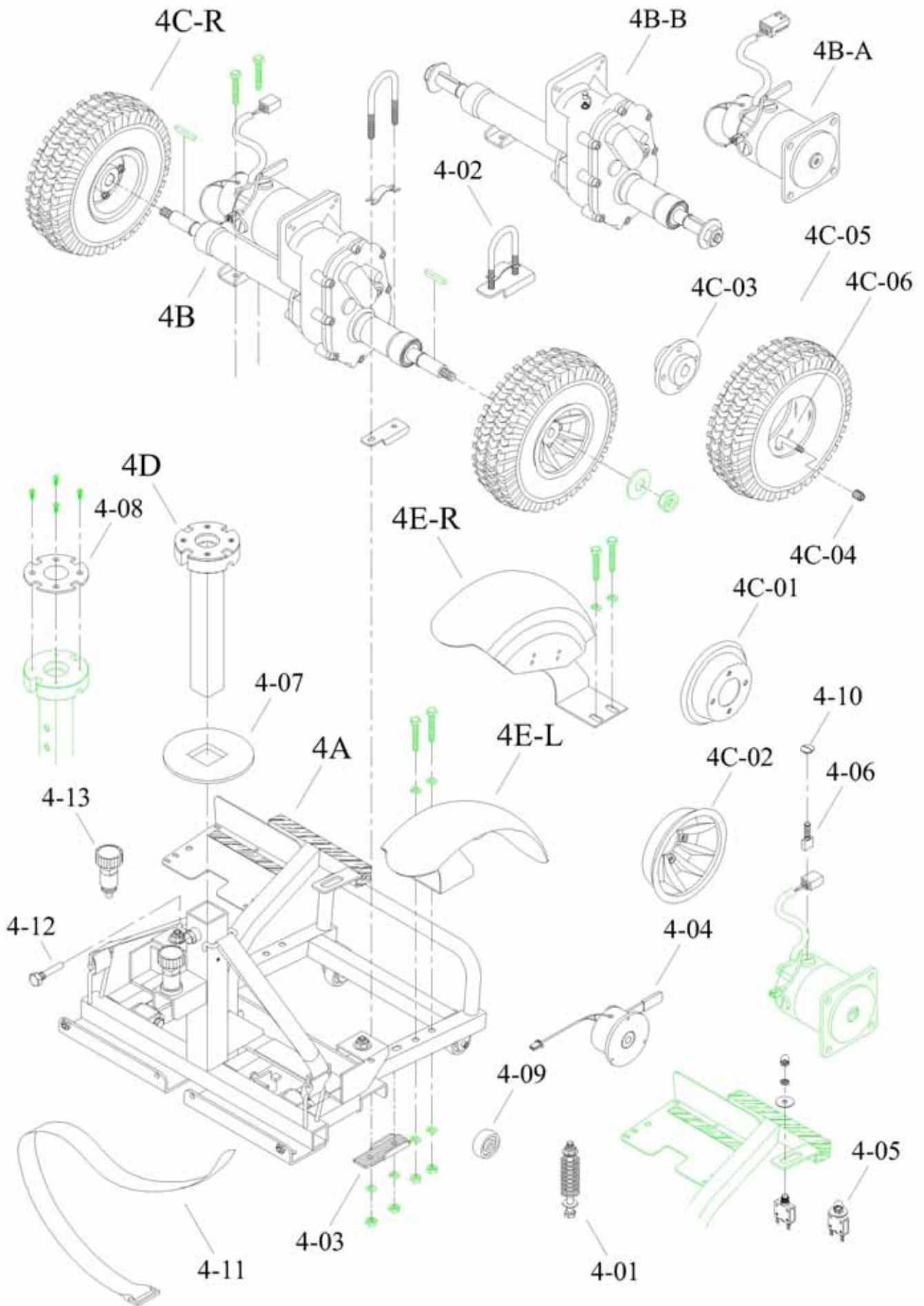
CHASSIS MOULDINGS



CHASSIS MOULDINGS

DRAWING NO.	PART NO.	PART NAME			
3A	AA04-2000-D2	FRONT CHASSIS COVER ASSY.			
3B	AA05-1209-D2	REAR CHASSIS COVER ASSY.			
3C	AA06-0100-D1	STAMP COVER ASSY.			
3-01	PAE3-0100-L	TAIL LIGHT LEFT ASSY. (RED)			
3-02	PAE3-0100-R	TAIL LIGHT RIGHT ASSY. (RED)			
3-03	PAE3-0200-L	INDICATOR LIGHT LEFT ASSY.			
3-04	PAE3-0200-L/R	INDICATOR RIGHT (R) / LEFT (F) ASSY.			
3-05	PAE3-0200-R	INDICATOR RIGHT ASSY.			
3-06	PKE3-0400	FRONT INDICATOR CONNECTING WIRE			
3-07	PKE3-0500	REAR INDICATOR CONNECTING WIRE			
3-08	PL00-0100	LABEL "FREERIDER"			
3-09	PP04-0405	CARPET			
3-10	PP04-0504	FLOOR MAT			
3-11	PP05-0400-R	REFLECTOR (RED)			
3-12	PP05-0400-Y	REFLECTOR (YELLOW)			

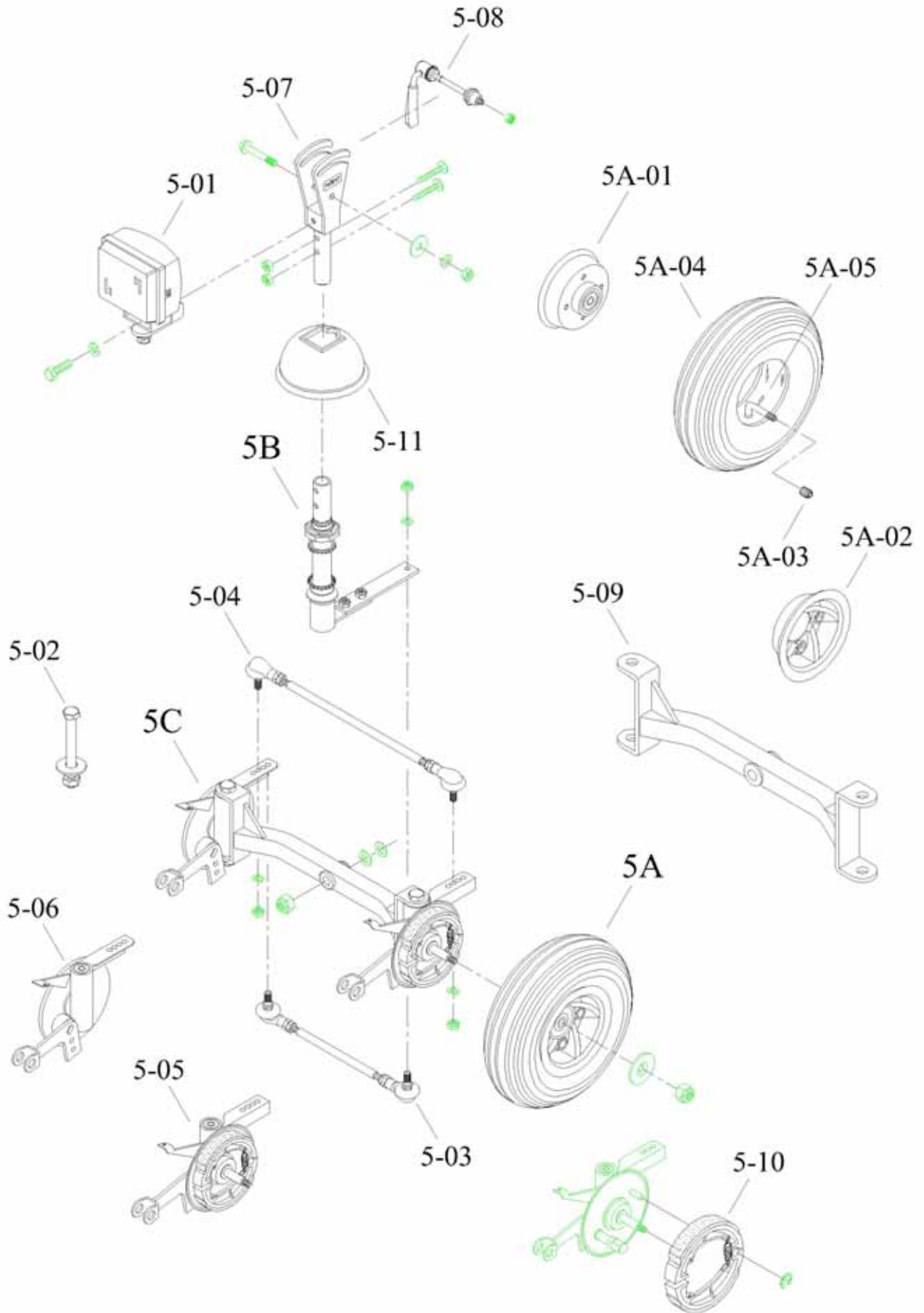
REAR CHASSIS ASSEMBLY-DRIVE SYSTEM



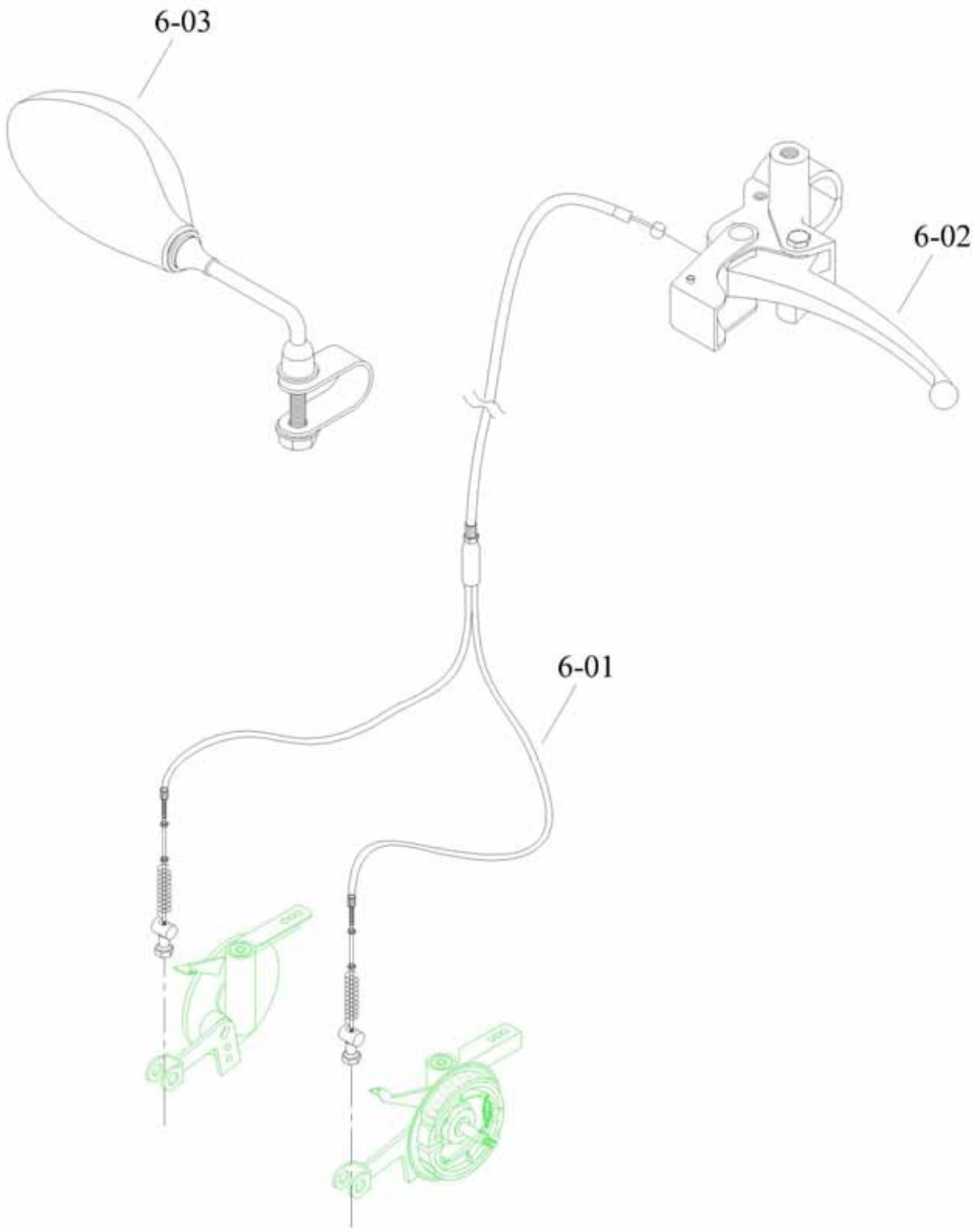
REAR CHASSIS ASSEMBLY-DRIVE SYSTEM

DRAWING NO.	PART NO.	PART NAME			
4A	AB07-0502B-S	REAR CHASSIS ASSY.			
4B	AC11-1503-SY57	102 TRANS AXLE ASSY.			
4B-A	PA05-A118-C	5700 RPM MOTOR ASSY.			
4B-B	PA11-A401	22:1 TRANS AXLE ASSY.			
4C-L	AC13-0401-L	REAR WHEEL ASSY. (LEFT)			
4C-R	AC13-0401-R	REAR WHEEL ASSY. (RIGHT)			
4C-01	PM12-0300	INNER RIM (STEEL) 13"			
4C-02	PM12-0400	OUTER RIM (AL., BLACK) 13"			
4C-03	PM13-0104	D19 HUB (REAR)			
4C-04	PP92-0001	VALVE CAP			
4C-05	PP92-0401-DI	(4.10/3.50-5) TYRE			
4C-06	PP93-0401-I	(4.10/3.50-5) TUBE			
4D	PA06-A701	SEAT POST ASSY.			
4E-L	PA07-B102-L	BRACKET ASSY. (LEFT)			
4E-R	PA07-B102-R	BRACKET ASSY. (RIGHT)			
4-01	PA06-B100	PRESSING SPIRAL SPRING ASSY.			
4-02	PA07-A600	M8 U TYPE SCREW ASSY.			
4-03	PA07-A700	U TYPE BRACKET ASSY.			
4-04	PM11-0111	MAGNETIC BRAKE			
4-05	PKE2-0403	CIRCUIT BREAKER 35AMP			
4-06	PM11-0408-41	MOTOR CARBON BRUSH			
4-07	PP06-0102	TUBBER COVER REAR FLAT			
4-08	PP06-0202	SEAT POST REAR FLAT			
4-09	PP07-0102	ANTI-TIP WHEEL SMALL			
4-10	PP11-0205	MOTOR CARBON BRUSH CAP			
4-11	PP90-0401	SEAT POST REAR FLAT			
4-12	PV00-0702-1	7/16×8×48L BOLT			
4-13	PV06-0801	RELEASE TIGHTEN KNOB			

STEERING



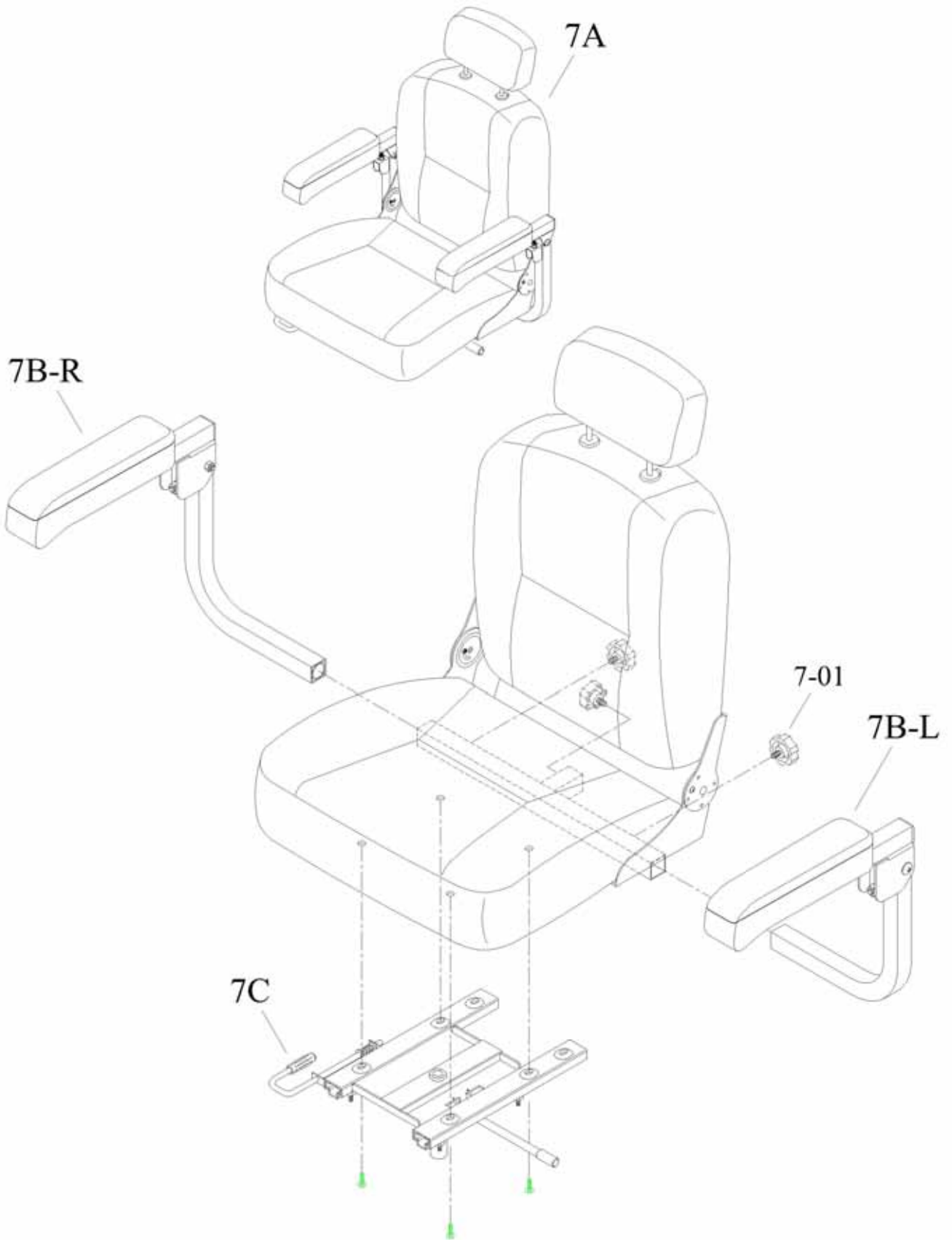
STEERING



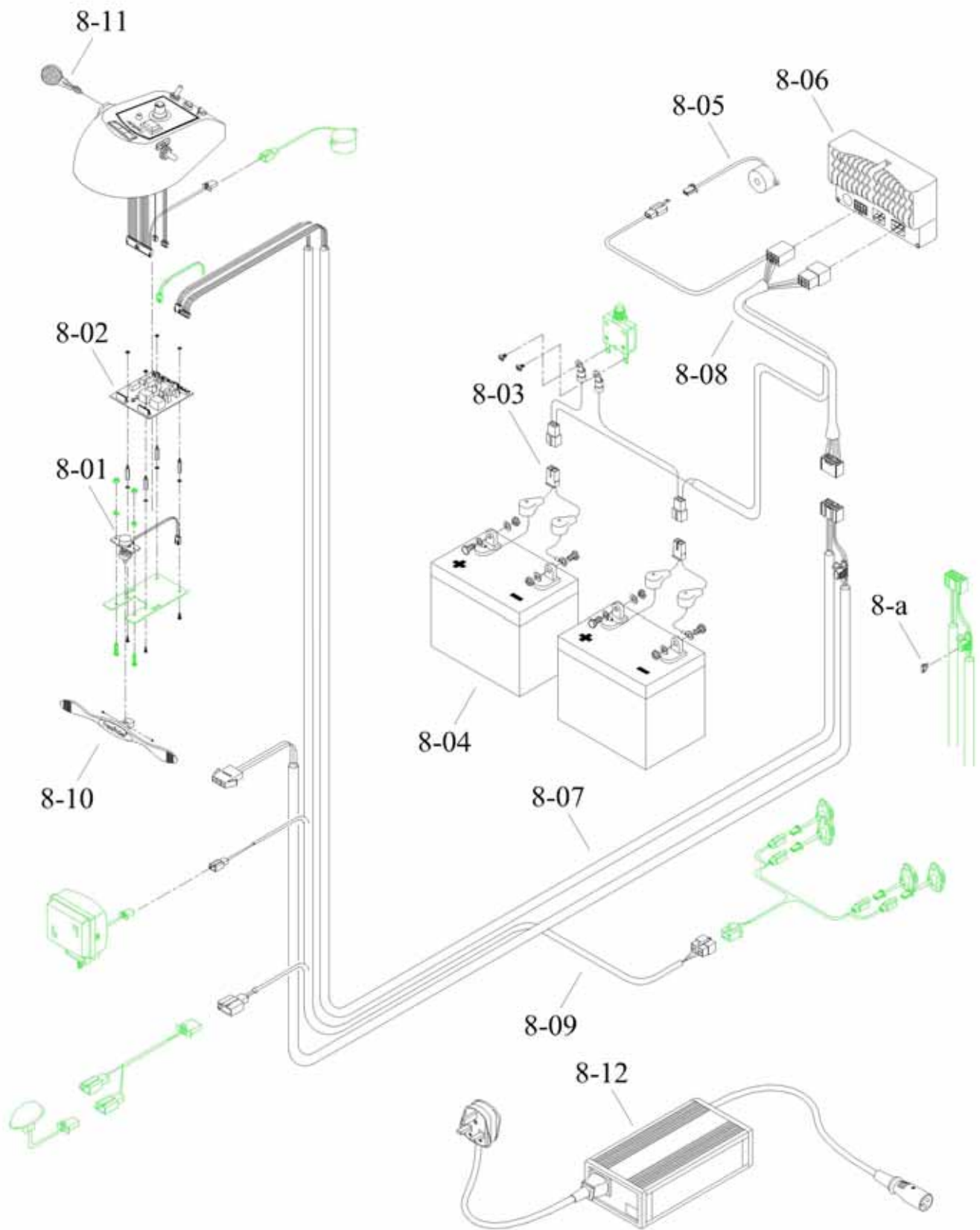
HAND BRAKE ASSEMBLY

DRAWING NO.	PART NO.	PART NAME			
6-01	PA19-A401	BRAKE CABLE ASSY.			
6-02	PM19-0101-L/D	HAND BRAKE (LEFT)			
6-03	PP90-0202-R	RIGHT MIRROR			

CAPTAIN'S SEAT ASSEMBLY



CONSOLE AND WIRING SYSTEM



CONSOLE AND WIRING SYSTEM

DRAWING NO.	PART NO.	PART NAME			
8-01	PA02-A200	5KVR POTENTIOMETER BRACKET ASSY.			
8-02	PAE1-0305	P.C.B (SPC 1 94V-0)			
8-03	PAE3-0300-R	BATTERY CABLE ASSY			
8-04	PK90-0206-GS	BATTERY (50A)			
8-05	PKE1-0601	REVERSE HORN			
8-06	PKE2-0105	CONTROLLER DS110			
8-07	PKE2-0211-F1	MAIN CABLE ASSY.			
8-08	PKE2-0312	MAIN CABLE FOR CONTROLLER			
8-09	PKE3-0606	LIGHT CABLE			
8-10	PM02-0300-D2	WIGWAG ACCELERATOR (AL.)			
8-11	PM90-0900	KEY			
8-12	PK90-C502-1	5A BATTERY CHARGER			
8-a	PKE1-1002-2	10A FUSE			